

**S-CAN 3D Ltd.**

Unit 10b  
Bunn's Bank Ind Est,  
Attleborough  
Norfolk  
UK  
NR17 1QD

Tel +44 (0)1953 857800  
Email info@atpowerthrottles.com  
Web www.atpower.com

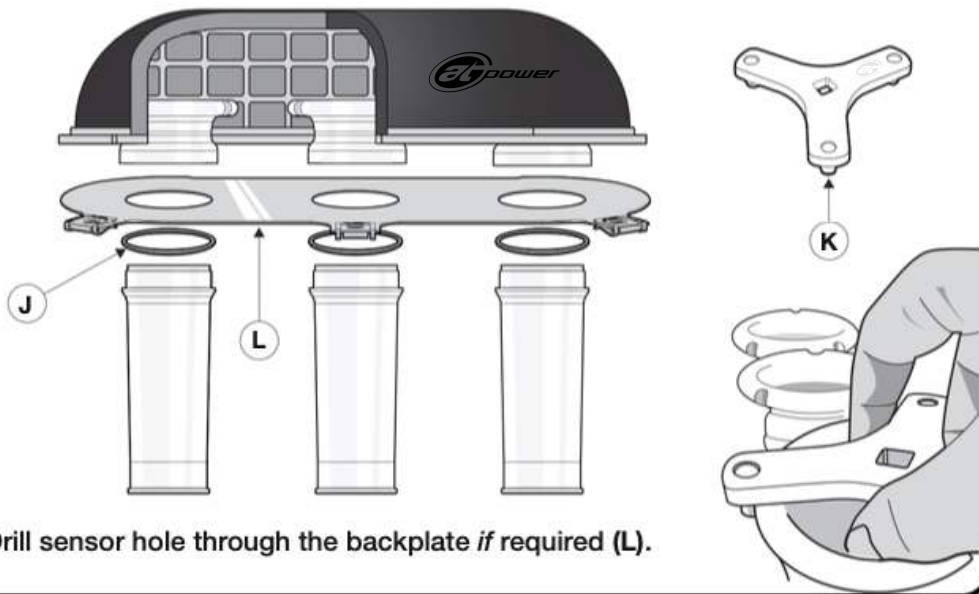


# Mega Flow Air Filter & Air Box Fitment

DATASHEET  
REV001 1.12.25

## Megaflow Air Filters

For air filters with an aluminum backplate, place one ram pipe washer on the top of each extension, below the backplate (J). Using the AT Power ram pipe torque tool (K), secure the ram pipes at 12-14 Nm.



Drill sensor hole through the backplate *if* required (L).

## Air Box

When using an air box, place one ram pipe washer on the top of each extension, below the backplate.

To prevent cross-threading ensure the inner surface of the backplate is smooth, flat, and of even thickness.

For air box installations subject to excessive vibration or shock loads, additional support brackets are recommended.



We reserve the right to modify this file's content or make technical changes without notice. For purchase orders, agreed terms take precedence. S-CAN 3D Ltd. accepts no liability for errors or omissions in this document.

**S-CAN 3D Ltd.**

Unit 10b  
Bunn's Bank Ind Est,  
Attleborough  
Norfolk  
UK  
NR17 1QD

Tel +44 (0)1953 857800  
Email info@atpowerthrottles.com  
Web www.atpower.com



# Throttle Ram Pipe (Trumpet) Fitment

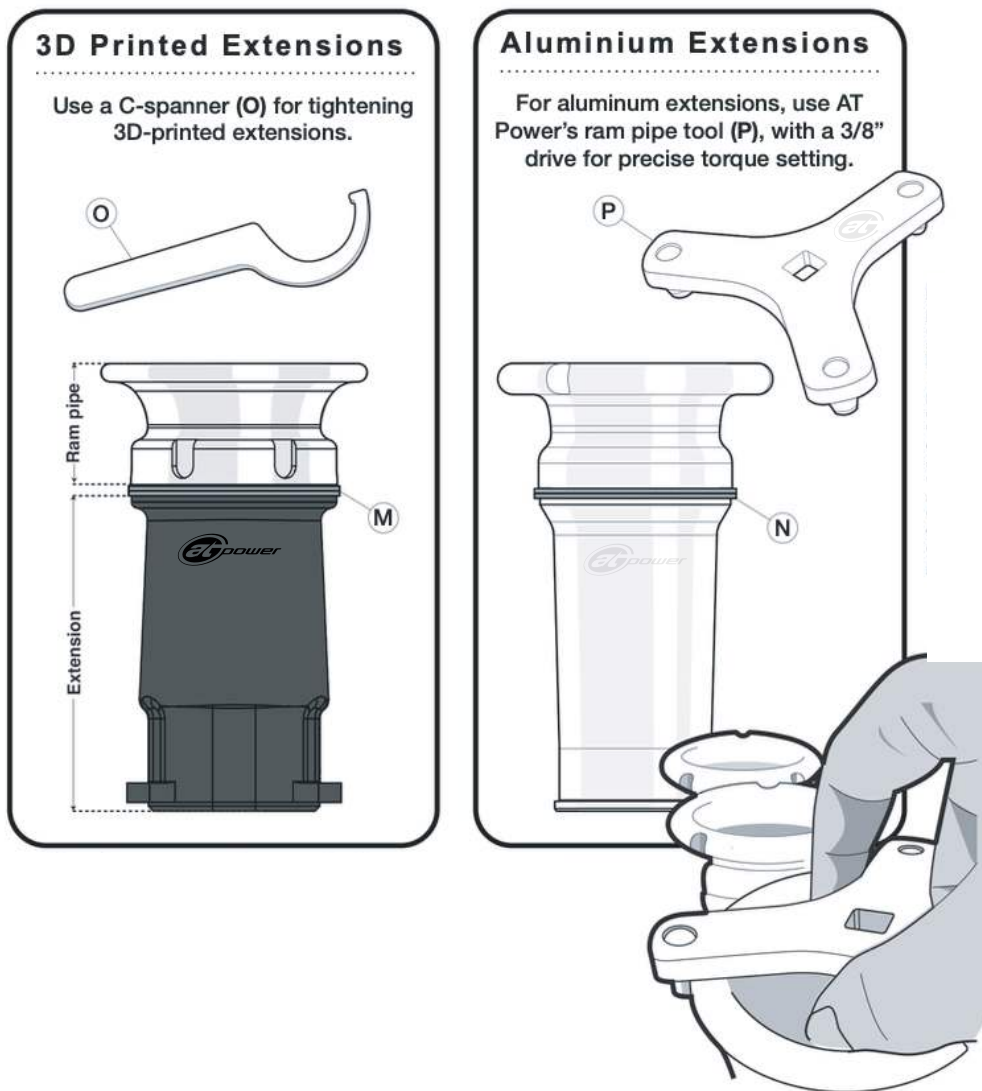
DATASHEET  
REV001 5.5.25

## No Air Filter or Air Box

Fit two ram pipe trumpet washers together if no air filter or air box is required. For 3D printed extensions below, sandwich two aluminium ram pipe washers together (M). For Aluminium extensions, use two plastic ram pipe washer (N).

When fitting the ram pipe, ensure threads align correctly and the clamping surface is smooth and flat.

The torque setting should be 12–14 Nm.



We reserve the right to modify this file's content or make technical changes without notice. For purchase orders, agreed terms take precedence. S-CAN 3D Ltd. accepts no liability for errors or omissions in this document.